

GRID HOPPERS

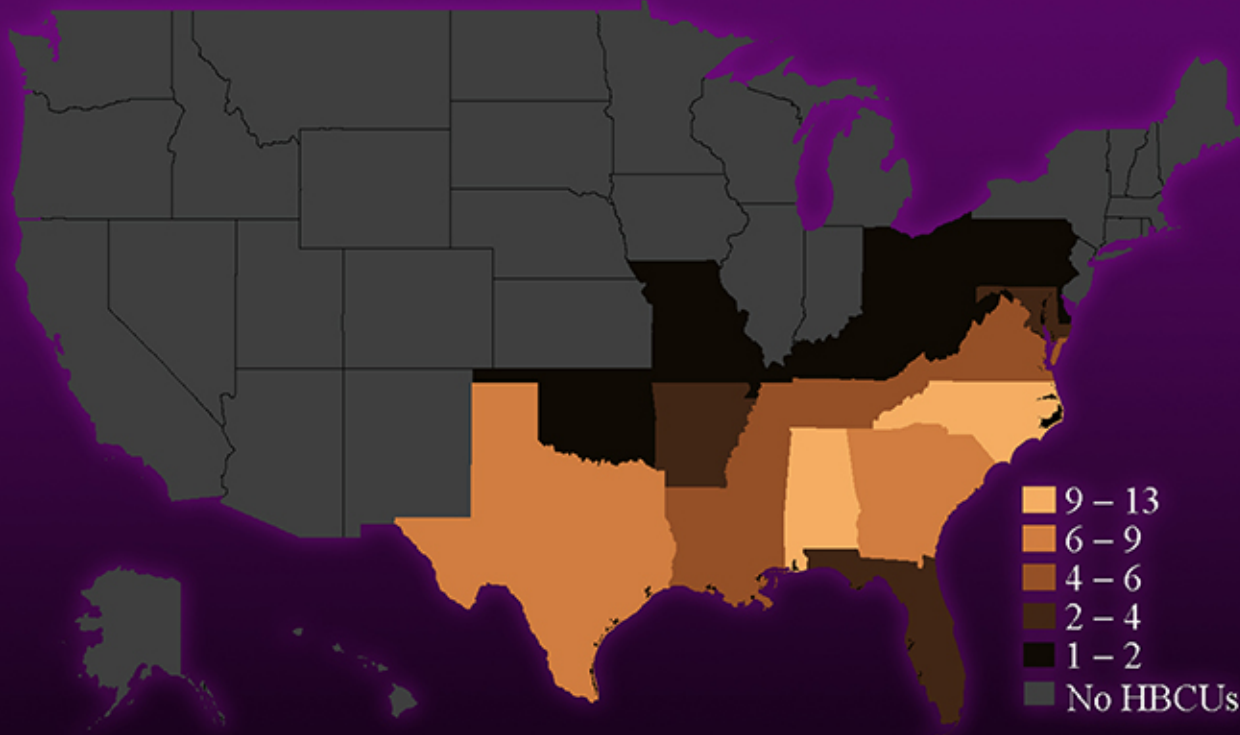
Project: Tera Watts



**Investing in HBCUs as Risk Mitigation
for Climate Change Action**

Project: Tera Watts

HBCUs Across the United States



HBCUs will create an Open Plugory Network to produce 12 TWhr/yr of zero carbon emission sustainable energy.

- ⚡ Energy Storage with Virgon® & Faralox®
- ⚡ Quantum Secure Wireless Energy (QsWe)
- ⚡ Juice DES TeraBots™: Last-mile EV Logistics

Bachelor of Science in Energy Intelligence (EI)

Project Tera Watts proves an essential 3-year bachelor's degree model so all stakeholders benefit from \$1.73T of reformed education value.



PLUGORY
OPEN PLUGORY NETWORK

Project Tera Watts

Enerjuice Technology and Global Impact	2
HexWheel™ Hubs and Plugory Systems	
Juice DES™	
The ARC™	
ESG Marketing Vehicles	
HBCUs: The World's Most Resilient Assets of Change	3
Implementation Strategy	
Historical Context	
Mission Loyalty	
NetZero Rhythm: ESG Cultural Pipeline	5
Global Impact of Black American Music	
Cultural Diplomacy	
Supporting Psychology	
NetZero Rhythm: Creative Director, Vinnie Bernard	9
Rhythm Preview	
NetZero Rhythm: Debut of the Interactive Micro Movie	10
Assisting in United Nations COP Reform	11
Proposed Asynchronous Timelines	12
T-One: HBCU Smart School Strategy & Implementations (5 yr.)	
T-Two: Juice DES™ v.ALPHA Development and Demonstration (2 yr.)	
T-Three: HexWheel Hub™ Development and Demonstration (3 yr.)	
T-Four: NetZero Rhythm Cultural Pipeline (3 yr.)	
T-Five: HBCU Degree Program (5 yr.)	
Budget Allocation (\$2 Billion)	14
Projected Rol: Stimulating Global Markets	18

United Nations HBCU ESG Implementation

The global demand for sustainable, resilient energy solutions aligns with the missions of BuildChange.org and COP29's call to action. [Open Plugory Network 501\(c\)\(3\)](#) presents a near term solution suite by Enerjuice™ —HexWheel™ Hubs, Plugory Systems, Juice DES™, The ARC™, and ESG (Environmental, Social, Governance) marketing vehicles —that collectively promise to reduce carbon emissions on a global scale while countering climate adversities. Our \$2 billion proposal outlines the implementation of Enerjuice proprietary technologies to achieve measurable impact, including a projected global reduction of 1 quadrillion BTUs in carbon emissions, fostering resilience in developing nations with vulnerable energy infrastructures.

Enerjuice Technology and Global Impact

HexWheel™ Hubs and Plugory Systems

HexWheel Hubs store renewable energy efficiently, creating decentralized microgrids managed by Juice DES. Plugory Systems enhance adaptability by integrating with various renewable sources, ensuring optimal energy use.

Impact: Reduction of reliance on fossil fuels, improved energy storage efficiency, and adaptability to catastrophic weather conditions.

Juice DES™

This decentralized energy management platform enables secure, quantum-safe data and energy transactions across microgrids, fostering transparency and equity.

Impact: Accelerated adoption of renewable energy microgrids in energy-deficient regions.

The ARC™

The Atmospheric Resonant Cage is a geodesic nanomaterial dome designed to protect critical infrastructure by absorbing and redirecting DEW energy. This multifunctional structure mitigates environmental and manmade threats.

Impact: Mitigation of energy insecurity in regions prone to DEWs and extreme weather, as highlighted in ARPA-e's concept paper on Faralox© and Virgon© technologies.

ESG Marketing Vehicles

Custom campaigns powered by the cultural narrative of “NetZero Rhythm” amplify climate action awareness, driving investments and retention in renewable energy initiatives.

Impact: Greater public engagement, fostering societal and cultural buy-in to climate solutions.

HBCUs: The World's Most Resilient Assets of Change

Implementation Strategy

Historically Black Colleges and Universities (HBCUs) are untapped catalysts for change, providing educational and cultural frameworks essential to realizing a \$1.73 trillion return on American education reform.¹ By installing a university [Plugory™ model](#) supported by Enerjuice climate technologies into curricula, HBCUs can pioneer three-year degrees in environmental sciences and renewable energy.

1. **Develop and manufacture Enerjuice solution suite in partnership with UL Research Institutes.**²
2. **Install Plugory model systems and UN Project Tera Watts curricula.**
3. **Create “NetZero Rhythm” Cultural Pipeline to mobilize ESG marketing vehicles that drive an essential movement of human spirit, real job opportunity and global climate change action.**

Historical Context

HBCUs have consistently demonstrated resilience, advancing social mobility for students from low-income backgrounds. Students at HBCUs ascend two or more income quintiles at nearly double the rate of those at non-HBCUs.³ **This result is critical for proving the argument of investment in mobilizing Black American resilience as climate change risk mitigation.**

Environmental racism directed towards black communities has forced heightened awareness and sensitivity to the effects of carbon emissions and climate change.

- **Disproportionate Climate Risks**

Black communities in the U.S. face greater exposure to climate hazards, such as extreme heat, flooding, and air pollution, due to historic redlining and environmental racism. These neighborhoods often lack adequate infrastructure and health protections, exacerbating the impacts of climate change.⁴ For instance, Black Americans are 34% more likely to live in areas with the highest increases in childhood asthma due to air pollution and are significantly impacted by extreme heat-related labor losses.

¹ Sanwal, Anand., [Skin in the game: Fixing higher education’s student debt problem](#) - Nov. 16, 2024

² Enerjuice has partnered with [UL Research Institute](#) to develop safety standards and compliance tools for quantum secure wireless energy distribution.

³ The White House, [The Economics of HBCUs](#) - May 16, 2024

⁴ US Environmental Protection Agency, [Findings on Disproportionate Risks of Climate Change to Black and African American Individuals](#) - Sept. 2021

- **Corporate Practices and Systemic Neglect**

Environmental racism, entrenched by discriminatory practices in land use and industrial siting, places polluting industries disproportionately near Black communities. These policies often result in poor health outcomes, higher rates of illness, and diminished quality of life.⁵ For example, industries in areas like Harlem and South Louisiana have exploited these communities while failing to reinvest in infrastructure improvements.

- **Narrative Erasure**

Black voices and experiences are frequently excluded from mainstream climate discourse, perpetuating a false narrative that these communities are disengaged from environmental issues. In reality, studies indicate high awareness and prioritization of climate-related challenges within Black and Brown communities.⁶

Since the Second Morrill Act of 1890, undeniable documentation shows that HBCUs continue to advance social mobility and academic excellence despite systemic underfunding and white control.

Mission Loyalty

Nearly non-existent investment by U.S. public and private sectors in HBCUs and Black communities has only heightened their loyalty to missions aligned with equity and justice. Addressing the funding disparities for HBCUs, such as the alarming gap in endowments compared to non-HBCUs, will not only amplify educational outcomes but also reduce carbon emissions through the development of sustainability-focused degree programs.

1. Catalyst for Equitable Climate Action

Investing in Black communities and Historically Black Colleges and Universities (HBCUs) can address systemic inequities. By empowering Black leaders and institutions, the clean energy transition can foster job creation, local resilience, and innovative solutions tailored to underserved areas.⁷

2. Economic and Environmental Benefits

Clean energy investments resonate strongly with Black communities, with 81% supporting policies linking climate action to job growth in infrastructure, manufacturing, and transportation. Black Americans are also disproportionately

⁵ Sajjad, Ifrah. [The fight for environmental equity: the disproportionate impact of climate change on African Americans](#) - March 1, 2004

⁶ Waldron, Ingrid. Canadian Climate Institute. [Environmental Racism and Climate Change: Determinants of Health in Mi'kmaw and African Nova Scotian Communities](#) - July 21, 2022

⁷ GreenLatinos, Third Way, & WE ACT for Environmental Justice. [Poll of Black and Latino/x Communities on Climate Change and the Clean Energy Transition](#)

motivated by intergenerational benefits of climate action, emphasizing its importance for future generations.⁸

3. Driving ESG Impact

Corporate social responsibility (CSR) initiatives that include racial equity audits and climate resilience strategies can align business goals with environmental justice, addressing both economic inequality and climate change.

NetZero Rhythm: ESG Cultural Pipeline

OPN will facilitate a cultural exchange pipeline between HBCUs, Nigeria, and India to generate ESG marketing campaigns that bridge climate science and energy intelligence (EI) with cultural resonance, counteracting climate skepticism spurred by regressive policies. The "NetZero Rhythm" initiative aims to leverage the global appeal of Black American culture—particularly music, and film—to create ESG (Environmental, Social, Governance) marketing vehicles in collaboration with Nigerian and Indian cultural entities. This exchange harnesses music's power as a transformative and unifying medium, aligning cultural resonance with climate action narratives.

These initiatives energize movements for environmental justice, ensuring climate solutions retain and inspire public participation.

Global Impact of Black American Music

Black American music has grown to be America's greatest cultural export generating billions of dollars annually and resonating deeply across demographics worldwide. Hip Hop's influence on culture can't be overstated—extending beyond music to encompass fashion, film, politics, and visual arts.⁹

Cultural Diplomacy

Programs such as the U.S. State Department's "Next Level" initiative have demonstrated the effectiveness of using American music—particularly jazz and hip-hop—as tools for diplomacy, fostering collaboration and cultural exchange globally. These programs highlight the potential for leveraging cultural exports to advance societal goals.

Former President Barack Obama frequently acknowledged music's ability to inspire change and unify people, describing it as a tool for fostering new ideas and engaging

⁸ GreenLatinos, Third Way, & WE ACT for Environmental Justice. [Poll of Black and Latino/x Communities on Climate Change and the Clean Energy Transition](#)

⁹ The Hinkley Institute. [Reframing the Conversation: 50 Years of Hip-Hop's Influence on the Culture and Social Movements](#) Jan. 29, 2024

communities. This aligns with psychological studies showing music’s ability to influence attitudes, behaviors, and group cohesion.¹⁰



Supporting Psychology

Programs such as the U.S. State Department’s "Next Level" initiative have demonstrated the effectiveness of using American music—particularly jazz and hip-hop—as tools for diplomacy, fostering collaboration and cultural exchange globally. These programs highlight the potential for leveraging cultural exports to advance societal goals. Studies from The Hinkley Institute indicate that music significantly increases retention of ideas by engaging emotions, improving focus, and fostering community bonds. By combining entertainment with actionable climate messaging, these ESG vehicles can sustain audience engagement while advocating for renewable energy adoption and policy reforms.¹¹

Project Tera Watts maximizes the transformative potential of investment in Black leaders and HBCUs with a proven history of global cultural trendsetting.

¹⁰ Gorzelany-Mostak, Dana. Keepin' It Real (Respectable) in 2008: Barack Obama's Music Strategy and the Formation of Presidential Identity May 18, 2016

¹¹ The Hinkley Institute. Reframing the Conversation: 50 Years of Hip-Hop's Influence on the Culture and Social Movements Jan. 29, 2024

Groot and Women of Enerjuice dream of a NetZero ...



STORYLINE
MIM
ALPHA

Bushra Amiwala • Sophia Kianni • Keeper L. Sharkey • Erica Grant • Sabina Sokol

*A fossil fueled man broke her heart.
Her cry motivated him to deliver
a new clean energy to Africa.*

*Love
in your
Life*

**MICRO MOVIE
ORIGINAL SOUNDTRACK**

**written & produced by
Vinnie Bernard**

STORYLINE
MLM
ALPHA

NetZero Rhythm: Creative Director, Vinnie Bernard

NetZero Rhythm Cultural Pipeline is ensured to have a dynamic, worldly appeal lead by Enerjuice Creative Director Vinnie Bernard. As a seasoned writer, producer and vocalist with three decades of unreleased albums, songs, and soundtracks Vinnie will be the “engine” of global collaborative ESG marketing vehicles.



V I N N I E B E R N A R D

Rhythm Preview

<p>“Spring” written, produced & performed by Vinnie Bernard</p>	<p>“Love in Your Life” written & performed by M. Logic produced by Vinnie Bernard</p>
<p>PLAY MP3 ▶</p>	<p>PLAY MP3 ▶</p>

NetZero Rhythm: Debut of the Interactive Micro Movie

HBCUs provide an abundance of creative talent and film production resources to demonstrate new approach to increasing the social impact and commercial value of ESG. By combining stereo disparity estimators, generative AI and a few simple new cinematography practices, a cost efficient enhancement of entertainment factor is achieved.



In 2015 New York Times Best Selling Author and professor emeritus (Rutgers University) [George Bernard Davis](#) and OPN co-founder Michael Logic™ Davis invented *systems and methods of gamification of artificial intelligence with live drama media*. OPN co-founder Dr. Gary Clark Alexander and Michael Logic evolved said patented computer science from broadcast TV systems to decentralized multimedia AI with optimized Energy Task Scheduling called “movie logic models”. Enerjuice and HBCU students will now develop the first demos for ...



Voice Controlled Interactive Movie Experiences
projected actuarial value: \$600B

$$\begin{matrix} \infty \\ \Sigma \end{matrix} \frac{\text{iaCount (pPOS + dPOS + amsC)}}{\text{iTime}^{gpT} + \text{MPMz} + \text{Marketing}} + \frac{\text{Subscription Fee} + \text{dvsMods}}{\text{iaCount}} + \text{Producer License Fee}$$

iaCount = 1

Limitless Scaling

Our proposed revenue formula is derived from limitless scaling of entertainment content and advertising real estate by unique technical elements in Storyline MLM.

- Physical Product CuePoint “placement” = pPOS
- Digital Product CuePoint “placement” = dPOS
- AI Impression Algorithm = iaCount
- Experience Affiliate Marketing Commission = amsC
- Universal Home Entertainment Depth Sensory/Voice peripheral = dvsMods
- Generative production tier = gpT
- Movie Logic Model file = MLM

Assisting in United Nations COP Reform

Operating with independence, resilience and virtually no support from opposing interests, collectively HBCUs can be seen as fast a developing small country operating within United States. Project Tera Watts is positioned to be the most successful United Nations ESG initiative in American history to drastically reduce greenhouse gas emissions and protect livelihoods from the worsening impacts of climate change.

COP29 Reform Measures	Project Tera Watts Action	Description
Streamline for speed and scale	Accelerate U.S. Decarbonization	NetZero Rhythm; humanization to inspire increased immediate climate action and accelerated adoption of HexWheel Hubs and Plugory Systems
Improve implementation and accountability	Establish HBCU Plugory Network	Elect Grid Hopper Delegates to allow students and top contributors to modularize project management at each Plugory node
Ensure robust tracking of climate financing	Launch <u>OppReach</u> Transparency Portal	OPN OppReach by Michael Logic™ Administration allows all stakeholders to track funding allocation, provide real-time updates and integrate with Storyline MLM™ for community outreach
Amplify the voice of authoritative science	Integrate Research of Subject Matter Experts	Certain NetZero Rhythm ESG Marketing Vehicles will be tailored to the research of reputable subject matter experts and institutions
Recognize the interdependencies between poverty, inequality and planetary instability	Dramatize first-hand Narratives of Climate Change Effects	United States, India, Nigeria and Ghana will be the initial focus of NetZero Rhythm dramatizations of climate change effects in underserved communities & developing countries
Enhance equitable representation	Provide scholarships and innovation endowment fund	Providing scholarships for underrepresented groups to participate in HBCU-led environmental science programs;

Proposed Asynchronous Timelines

T-One: HBCU Smart School Strategy & Implementations (5 yr.)

A smart campus |

1 | Establishing the foundation



311
Climate and air quality improvements



7,500
Smart campus devices and 187 meters installed



119
Fire systems inspected, tested and maintained to create a safer environment



LED
lighting campus-wide for improved safety

2 | Modernize infrastructure + technology

21.5%
Utility savings

\$330K
Rebates + incentives

\$4.6M
Guaranteed savings over 15 years

3 | Activate smart campus operations

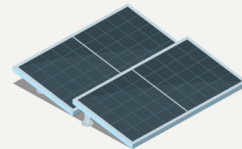
5,277
tons of GHG reduced through master energy and sustainability plan

443
Carbon reduction equivalent to 443 vehicles driven per year

2,498
acres of U.S. forests saved

4 | Clean energy and innovative technologies

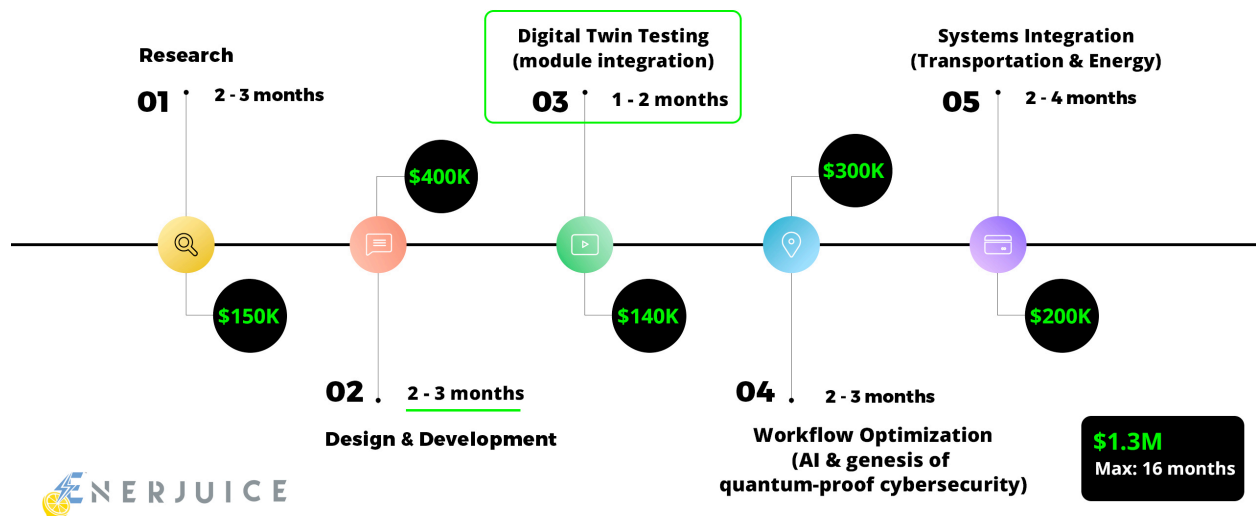
By producing and storing its own clean energy, MSU can become a more sustainable, resilient campus for a more sustainable future.



SIEMENS

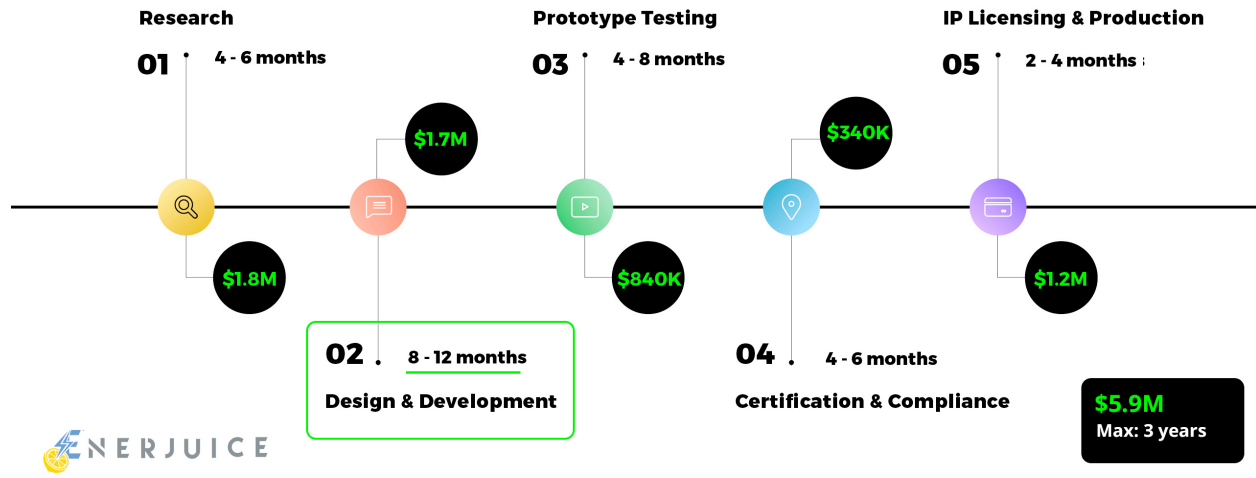
T-Two: Juice DES™ v.ALPHA Development and Demonstration (2 yr.)

JUICE DES Prototype Development Timeline



T-Three: HexWheel Hub™ Development and Demonstration (3 yr.)

HEXWHEEL™ Commercialization Timeline



T-Four: NetZero Rhythm Cultural Pipeline (3 yr.)



T-Five: HBCU Degree Program (5 yr.)



Budget Allocation (\$2 Billion)

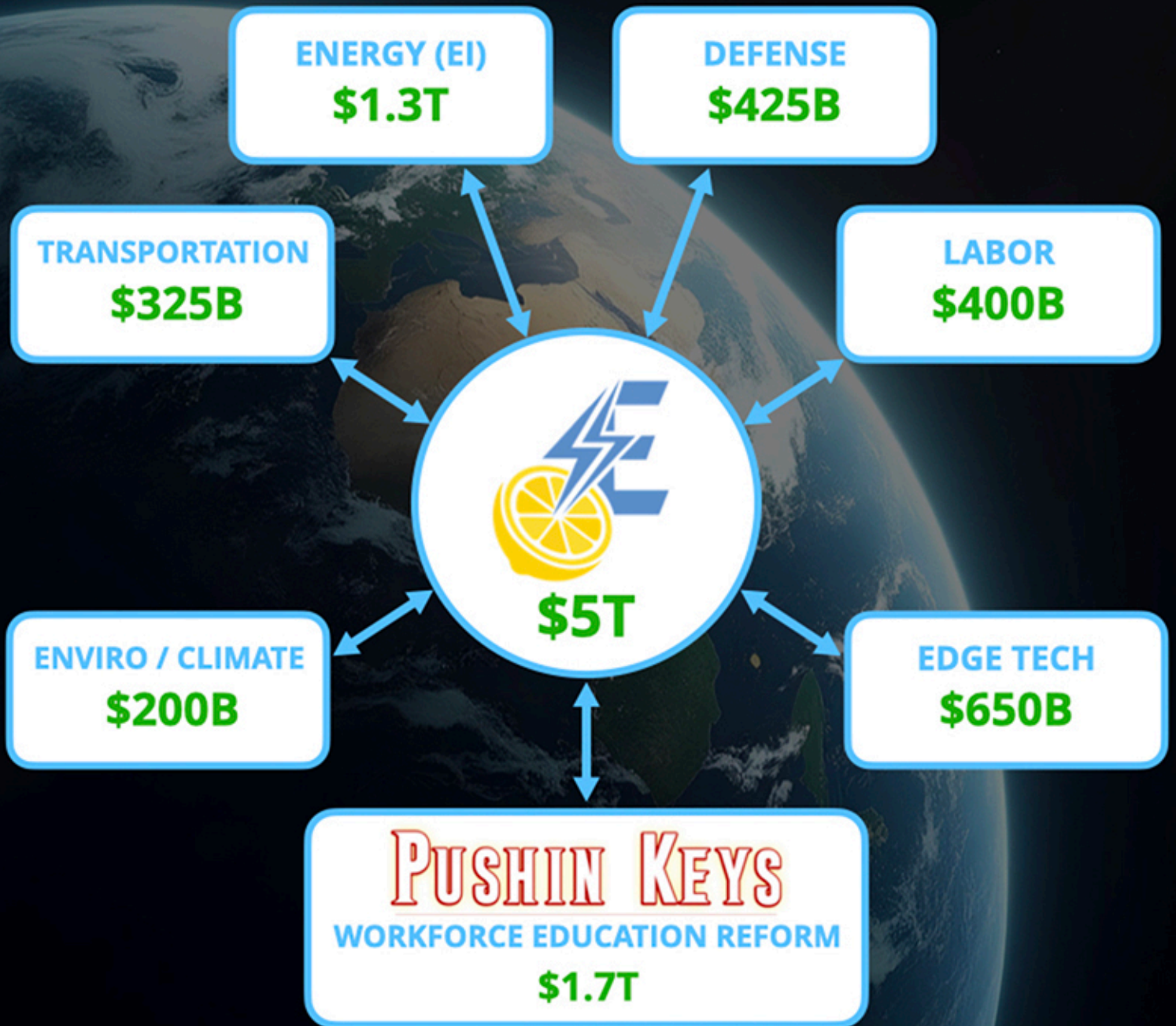
Stakeholder	Estimated Enrollment	% of Total HBCU	Budget (over 5yr period)
Alabama A&M University	6,100	2.05%	\$37,000,000
Albany State University	6,100	2.05%	\$37,000,000
Alcorn State University	3,200	1.07%	\$19,581,000
Arkansas Baptist College	1,100	0.37%	\$6,771,000
Benedict College	2,000	0.67%	\$12,261,000
Bennett College	470	0.16%	\$2,928,000
Bethune-Cookman University	3,100	1.04%	\$19,032,000
Bishop State Community College	1,800	0.60%	\$10,980,000
Bluefield State University	1,300	0.44%	\$8,052,000
Bowie State University	6,200	2.08%	\$38,064,000
Central State University	2,500	0.84%	\$15,372,000
Cheyney Univ. of Pennsylvania	1,200	0.40%	\$7,320,000
Charles R. Drew University	700	0.23%	\$4,209,000
Clafin University	2,200	0.74%	\$13,542,000
Clark Atlanta University	3,900	1.31%	\$23,973,000
Concordia College Alabama	568	0.19%	\$3,477,000
Coppin State University	2,500	0.84%	\$15,372,000
Delaware State University	5,000	1.68%	\$30,744,000
Dillard University	1,200	0.40%	\$7,320,000
Edward Waters University	1,200	0.40%	\$7,320,000
Elizabeth City State University	2,500	0.84%	\$15,372,000
Fayetteville State University	5,100	1.71%	\$31,293,000
Fisk University	1,000	0.34%	\$6,222,000
Florida A&M University	9,913	3.32%	\$60,756,000

Stakeholder	Estimated Enrollment	% of Total HBCU	Budget (over 5yr period)
Florida Memorial University	1,800	0.60%	\$10,980,000
Fort Valley State University	2,800	0.94%	\$17,202,000
Grambling State University	5,150	1.73%	\$31,659,000
Hampton University	4,000	1.34%	\$24,522,000
Harris-Stowe State University	1,300	0.44%	\$8,052,000
Howard University	12,605	4.05%	\$74,115,000
Huston-Tillotson University	1,100	0.37%	\$6,771,000
Jackson State University	7,000	2.35%	\$43,005,000
Jarvis Christian University	900	0.30%	\$5,490,000
Johnson C. Smith University	1,600	0.54%	\$9,882,000
Kentucky State University	2,000	0.67%	\$12,261,000
Langston University	2,400	0.80%	\$14,640,000
Lawson State Comm. College	2,200	0.74%	\$13,542,000
LeMoyne-Owen College	1,000	0.34%	\$6,222,000
Lincoln University of Missouri	3,000	1.01%	\$18,483,000
Lincoln University of Penn.	2,200	0.74%	\$13,542,000
Medgar Evers College (CUNY)	6,900	2.31%	\$42,273,000
Miles College	1,700	0.57%	\$10,431,000
Mississippi Valley State Univ.	2,190	0.73%	\$13,359,000
Morehouse College	2,200	0.74%	\$13,542,000
Morehouse School of Medicine	500	0.17%	\$3,111,000
Morgan State University	7,700	2.58%	\$47,214,000
Morris Brown College	400	0.13%	\$2,379,000
Norfolk State University	5,200	1.74%	\$31,842,000
North Carolina A&T State Univ.	11,877	3.98%	\$72,834,000

Stakeholder	Estimated Enrollment	% of Total HBCU	Budget (over 5yr period)
North Carolina Central University	8,579	2.88%	\$52,704,000
Oakwood University	1,800	0.60%	\$10,980,000
Paine College	800	0.27%	\$4,941,000
Paul Quinn College	900	0.30%	\$5,490,000
Philander Smith College	1,000	0.34%	\$6,222,000
Prairie View A&M University	9,000	3.02%	\$55,266,000
Rust College	1,100	0.37%	\$6,771,000
Savannah State University	3,000	1.01%	\$18,483,000
Shaw University	1,300	0.44%	\$8,052,000
South Carolina State University	2,500	0.84%	\$15,372,000
Southern Univ. and A&M College	6,200	2.08%	\$38,064,000
Southern Univ. at New Orleans	2,200	0.74%	\$13,542,000
Southern Univ. at Shreveport	2,200	0.74%	\$13,542,000
Spelman College	2,400	0.80%	\$14,640,000
St. Augustine's University	1,200	0.40%	\$7,320,000
Stillman College	1,100	0.37%	\$6,771,000
Talladega College	1,200	0.40%	\$7,320,000
Tennessee State University	8,081	2.71%	\$49,593,000
Texas Southern University	7,500	2.52%	\$46,116,000
Tougaloo College	900	0.30%	\$5,490,000
Tuskegee University	3,100	1.04%	\$19,032,000
Univ. of Arkansas at Pine Bluff	2,500	0.84%	\$15,372,000
Univ. of Maryland Eastern Shore	3,100	1.04%	\$19,032,000
Univ. of the District of Columbia	3,200	1.07%	\$19,581,000
Virginia State University	4,500	1.51%	\$27,633,000

Stakeholder	Estimated Enrollment	% of Total HBCU	Budget (over 5yr period)
Virginia Union University	1,600	0.54%	\$9,882,000
Voorhees University	600	0.20%	\$3,660,000
West Virginia State University	3,800	1.27%	\$23,241,000
Wilberforce University	900	0.30%	\$5,490,000
Wiley College	900	0.30%	\$5,490,000
Winston-Salem State University	5,200	1.74%	\$31,842,000
Xavier University of Louisiana	3,000	1.01%	\$18,483,000
NetZero Rhythm Creative Works-For-Hire	NA	NA	\$50M
Grid Hoppers EI Scholarships & Endowment Fund	NA	NA	\$90M
Open Plugory Network 501(c)(3)	NA	NA	\$30M

STIMULATING GLOBAL MARKETS



Multi-purpose infrastructure utilization of energy intelligence (EI) and private-public partnerships address the high investment cost challenges in commercialization of quantum secure wireless energy distribution.